

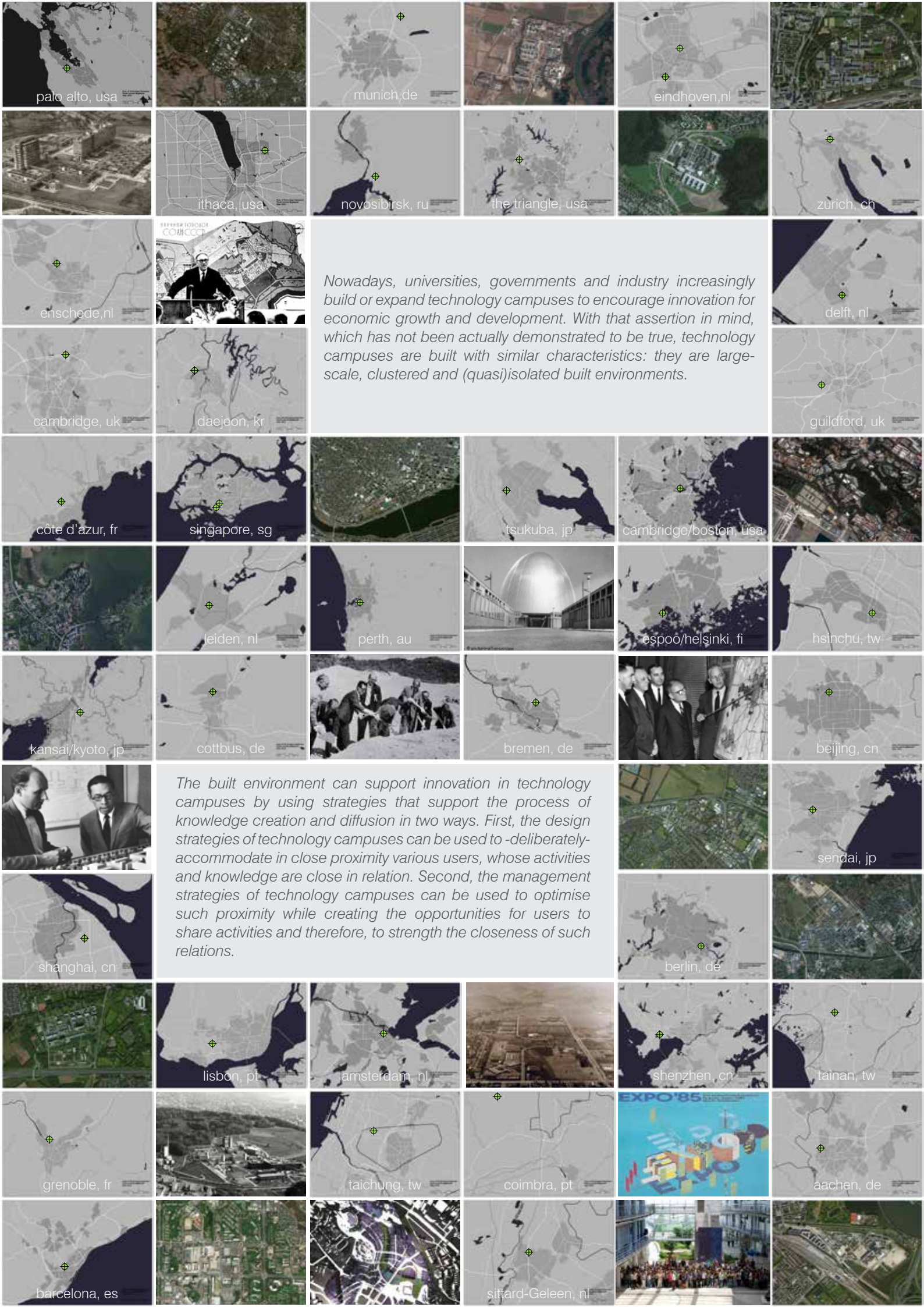
technopoles creative factories science parks
urban campuses technology parks science cities
 knowledge university campuses greenfield campus
 locations open university research park
 tech hightech innovation knowledge corporate campuses
 hubs campus campuses campuses quarters

technology campuses in cities



a study on the built environment supporting innovation

39 research sites 69.600 hectares 37 cities
 16 countries 5 built form qualities
 5 design/planning concepts 4 global regions 5 topological relationships
 6 spatial/functional layouts 21 mixed sources of funding 2 block patterns
 5 context aspects 5 main ambitions 3 main stakeholders
 1 accommodation solution 11 partnerships 1,3 million users
 3 stakeholders' roles



palo alto, usa

munich, de

eindhoven, nl

ithaca, usa

novosibirsk, ru

the triangle, usa

zurich, ch

enschede, nl



Nowadays, universities, governments and industry increasingly build or expand technology campuses to encourage innovation for economic growth and development. With that assertion in mind, which has not been actually demonstrated to be true, technology campuses are built with similar characteristics: they are large-scale, clustered and (quasi)isolated built environments.

delft, nl

cambridge, uk

daejeon, kr

guildford, uk

côte d'azur, fr

singapore, sg

tsukuba, jp

cambridge/boston, usa

leiden, nl

perth, au

espo/helsinki, fi

hsinchu, tw

kansai/kyoto, jp

cottbus, de

bremen, de

beijing, cn

The built environment can support innovation in technology campuses by using strategies that support the process of knowledge creation and diffusion in two ways. First, the design strategies of technology campuses can be used to -deliberately- accommodate in close proximity various users, whose activities and knowledge are close in relation. Second, the management strategies of technology campuses can be used to optimise such proximity while creating the opportunities for users to share activities and therefore, to strength the closeness of such relations.

shanghai, cn

sendai, jp

berlin, de

lisbon, pt

amsterdam, nl

shenzhen, cn

tainan, tw

grenoble, fr

taichung, tw

coimbra, pt

aachen, de

barcelona, es

sittard-Geleen, nl

